



## KarmaQuest Ecotourism and Adventure Travel

### A Women's Tour

## A Tapestry of Textiles, and Premier Cultural and Religious Sites of North India – January 11 to 28, 2011



"Since ancient times, textiles have been associated with important rituals and social occasions in India. Sacred sculptures are traditionally clothed, and strips of cloth are hung on trees and poles as offerings around Hindu shrines. Cloth is given when a baby is born and when a man reaches 60 and renews his marriage vows with his wife. Textiles became political when Gandhi's call for hand-spun Indian cloth—and thus less reliance on British goods—turned into the rallying cry for independence in the 1940's.

"In fact, India's history is so interwoven with textiles that it is hard to separate the two. Cotton and silk are indigenous, and when weavers discovered how to make colorfast dyes,

Indian fabrics were the envy of the world. One of Alexander the Great's commanders, upon arrival in the subcontinent, marveled that Indian cloth "rivalled sunlight and resisted washing." The closely guarded secret of the dyes led the British to establish trading posts in Gujarat in 1613... Gujarat... remains (an) important textile center to this day." (Levathes, Louise. December 2006. "The Fabric of India," Travel and Leisure.)

**Terra Nova Travel** is pleased to present another **KarmaQuest trip** specially designed for **Christina Wilson** and friends. This trip takes us to some of India's oldest and most renowned **centers of textile production and artistry** where we'll see ancient techniques of creating and decorating fabrics that still hold an important place in Indian society today. We'll hear from masters of these ancient arts, watch as skilled craftsmen and women create **museum-quality handicrafts**.

We'll visit **premier religious and cultural sites** with priceless 2000 year old Buddhist statues and art, and of course the famous **Taj Mahal** in Agra before trip's end. In the historic and thriving urban centers of **Mumbai and Delhi**, we'll tour not only the sightseeing 'must sees' but lesser known favorites that reveal the unique rhythms of life on India's streets today. In smaller towns, we'll have time to **roam the bazaars and meet local artisans** whose wares will surely tempt our pocket-books. In Rajasthan, we'll **live like maharanis in restored 18<sup>th</sup> century palaces**, dining in exquisite North Indian cuisine, indulging in *ayurvedic* spa treatments and gracious Indian hospitality. The itinerary is paced at an **unhurried tempo** and planned to allow you to opt out of scheduled activities from time to time and spend time as you wish.

**Note:** Trip dates include international travel days for most flight routings. Please check your routing and schedule carefully.

### A Women's Tour

## A Tapestry of Textiles, and Premier Cultural and Religious Sites of North India



**KarmaQuest Ecotourism and Adventure Travel**

## ITINERARY



### **Day 1: Departure from US (January 11, Tuesday)**

Leave your home city on January 11th (depending upon flight routing)

### **Day 2: Arrive in Mumbai (January 12, Wednesday)**

Arrive at the Mumbai airport (possibly late at night/early in the morning), where you'll be met and assisted with a transfer to your hotel for check-in. The Taj Mahal Tower Mumbai is a prestigious luxury hotel located in the Colaba region of Mumbai, next to the Gateway of India and close to the Arabian Sea. Rooms offer a refreshing mix of European style. The Taj Mahal Tower (1973) stands in

harmonious contrast to the century old Taj Mahal Palace. **Overnight (O/N) at the Taj Mahal Tower (or similar), Mumbai .**

### **Day 3: Mumbai (January 13, Thursday)**

After a leisurely morning to recover from the long flight, proceed on a **city tour** of Mumbai. Return to the hotel to rest before a **Welcome Dinner** of delicious Indian cuisine. **Overnight (O/N) at the Taj Mahal Tower (or similar), Mumbai. B/D**

### **Day 4: Mumbai / Aurangabad (January 14, Friday)**

Take a 45 min morning flight to Aurangabad and transfer to the hotel for a short rest and lunch. In the afternoon, drive to the **Ellora Caves** (29 km). A **UNESCO World Heritage Site**, the 34 monasteries and temples, extending over more than 2 km, were dug side by side in the wall of a high basalt cliff. This uninterrupted sequence of monuments, dating from A.D. 600 to 1000, is a complex a unique artistic creation and a technological wonder. Its sanctuaries are devoted to Buddhism, Hinduism and Jainism, illustrating the spirit of tolerance that was characteristic of ancient India. **O/N at the Quality Meadow Inn (or similar), Aurangabad. B/**



### **Day 5: Aurangabad (January 15, Saturday)**

In the morning, travel to the **Ajanta Caves**, 106 kms away. The caves date back to the 2nd century BC. Thirty rock hewn caves are adorned with Buddhist sculptures and frescoes portraying religious and secular life through eight centuries. A **UNESCO World Heritage Site**, the paintings and sculptures of Ajanta are considered masterpieces of Buddhist religious art, and have had considerable influence on subsequent art. **O/N at the Quality Meadow Inn (or similar), Aurangabad. B/**

*A Women's Tour*

A Tapestry of Textiles, and Premier Cultural and Religious Sites of North India



## KarmaQuest Ecotourism and Adventure Travel

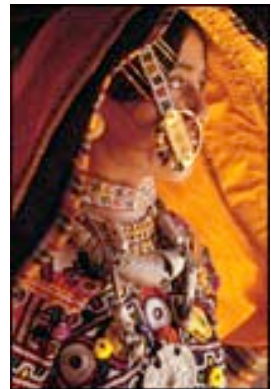
### Day 6: Aurangabad / Mumbai / Bhuj (January 16, Sunday)

In the morning transfer to Aurangabad airport for a 45 min flight to Mumbai. Board an onward flight to Bhuj. Proceed for sightseeing of Bhuj, and check into the hotel located outside (15 km) of Bhuj town, a good base for **exploring the handicrafts and textile traditions** of the diverse Muslim, Hindu, and Jain people in rural Kutch. **Overnight at the Garha Safari Lodge (or similar), Bhuj. B/**



### Day 7: Bhuj (January 17, Monday)

Visit the Banni villages to see the traditional handicrafts of Abyssinian settlers (*left*) who migrated to India from Abyssinia in the 10th century and continue to create exquisite glass embroidery works. Visit the **Kala Raksha Center**. Co-founded by Judy Frater, former associate curator of the Textile Museum in Washington, D.C., this trust **supports local artisans** and preserves traditional crafts in Kutch. **Overnight at the Garha Safari Lodge (or similar), Bhuj. B/**



*The region of Kutch is famous for its embroideries, particularly notable in this stark landscape. Historically, the custom of giving embroidered articles to brides supported the craft, carried from generation to generation. Embroidered articles still form an important part of 'dowry' (right). Embroidery work is also done on leather shoes or 'Mojdi,' purses, bags, belts, wallets etc. Hodko village in Banni is famous for its Meghwal embroidery and leather work. Banni embroidery, with its intricate minute designs in gorgeous colors, is considered to be the most outstanding and exquisite among the different types of Kachchhi embroidery. This school derives its name from the vast stretch of semi-desert land called Banni. It is represented by the Lohanas of Khavda and the Jats, Mutwas, Harijans etc. of Banni villages. Tunda Wandh, a village between Mandvi and Mundra, is also an artisan's village. We'll visit several villages to see their unique craft styles.*



### Day 8: Bhuj / Jamnagar (January 18, Tuesday)

After breakfast, drive to Jamnagar (approx. 261 km – 5 hrs), located just south of the Gulf of Kutch. Jamnagar has India's only **Ayurvedic university** (Ayurvedic medicine is a system of traditional medicine native to India), and is known for its four **marble Jain temples**, built during the 16<sup>th</sup> and 17<sup>th</sup> centuries. After a short tour of town, enjoy a restful afternoon day at your leisure. **O/N at the Hotel Express (or similar), Jamnagar. B/**

## A Women's Tour

A Tapestry of Textiles, and Premier Cultural and Religious Sites of North India



## KarmaQuest Ecotourism and Adventure Travel



### Day 9: Jamnagar (January 19, Wednesday)

In the morning visit "tie and dye" centers where the **original "tie-die"** designed fabric is produced, and made into clothes. Gold embroidery work is also done on cloth and clothes (*left*). Return to the hotel. **O/N at the Hotel Express (or similar), Jamnagar. B/**

*Bandhni (tie and dye) was introduced in Jamnagar when the city was founded 400 years ago. This city has now become one of the principal centers of bandhni, creating new patterns and experimenting with modern colors. The centers of tie and dye fabrics in Gujarat are Ahmedabad and Jamnagar (in the Saurashtra region of Gujarat), where the water brings out the brightest reds while dyeing.*

### Day 10: Jamnagar / Ahmedabad (January 20, Thursday)

In the morning drive to Ahmedabad (approx. 313 km/6 hrs via Rajkot). On arrival check in to the hotel, have lunch and take a short rest. In the afternoon proceed for sightseeing to the **Gandhi Ashram**, where Mahatma Gandhi -- "Father of the Nation" -- stayed from 1915 to 1933 in "search of Truth and to develop Fearlessness." We'll learn of his life and see some of his belongings representing his commitment to simple living. We'll also visit the Sidi Syed Mosque and the Bhadra fort, historical sites of Ahmedabad. **Overnight at the Le Meridien Hotel (or similar), Ahmedabad. B/**

### Day 11: Ahmedabad / Udaipur (January 21, Friday)

Take an early morning walk in the old city when traders are out, passing under the "prols" or gates and through narrow lanes of old Ahmedabad. Afterward, visit the **Calico Museum of Textiles**, a mecca among textile museums, with one of the world's finest collections of antique and contemporary Indian textiles, including rare tapestries and costumes, furniture and crafts gathered from throughout India. It is housed in traditional village houses and is located in Shahi Bagh Gardens, about 5 km north of Ahmedabad. After lunch, drive to Udaipur (approx. 246 km - 5 hrs). **Overnight at the Shiva Niwas Palace Hotel (or similar), Udaipur. B/**

### Day 12: Udaipur (January 22, Saturday)

Proceed for morning sightseeing of Udaipur's **City Palace Museum** (*see below*) where royal treasures are on display. Imagine the life of a *maharani* in these times! Afterward, tour the picturesque Lake Pichola -- ringed by palaces and stately mansions -- by boat and return to shore for lunch. In the afternoon, you'll have a choice of **free time** to relax at your hotel or explore Udaipur; or transfer (28 km) to the luxurious **Devi Garh Palace Resort** for your choice of splendid **spa treatments**. The 18th century Devi Garh palace has been restored using local marbles and semi-precious stones blended with contemporary design and impeccable service. (Spas, lunch and transfers to and from the Devi Garh are not included in the tour price; transfer assistance will be provided). Dinner on your own. **Overnight at the Hotel Shiv Niwas Palace (or similar), Udaipur. B/**



## A Women's Tour

A Tapestry of Textiles, and Premier Cultural and Religious Sites of North India



## KarmaQuest Ecotourism and Adventure Travel



A blend of Medieval European and Chinese architecture, **Udaipur's City Palace** complex has a number of remarkable buildings of immense beauty, gardens and fountains. The oldest part of the palace, 'Raj Aangan' (Royal Courtyard-1571), was built by Maharana Udai Singh in the 16th century. The main part of the palace with its several 'Mahals' is now preserved as a museum. Most all the rooms have beautiful paintings, inlay glass work, antique furniture and colorful enamel.



### **Day 13: Udaipur / Jaipur (January 23, Sunday)**

Depart one royal city for another: Jaipur. In the morning transfer to airport to board a one hour flight to Jaipur; transfer to the hotel. Later proceed for a sightseeing of this pink sandstone city, visiting the **Hawa Mahal** (Palace of Winds) *left*, City Palace and the museum, the Observatory and the **bazaar**, famous for colorful clothes, jewelry, and much more. Overnight at the Jai Mahal Palace, set amidst 18 acres of beautifully landscaped Moghul gardens. **Overnight at the Jai Mahal Palace (or similar), Jaipur. B/**

### **Day 14: Jaipur (January 24, Monday)**

In the morning, visit the **Amber Fort** (riding by elephant to the top of the fort), with its highlights the Kali Mandir, Jai Mahal and Sheesh Mahal. In the afternoon, visit Sanganer town to see the famous "**tie and dye**" process (of a different look than in Jamnagar) and the production of **hand-made paper**. **Overnight at the Jai Mahal Palace (or similar), Jaipur. B/**

### **Day 15: Jaipur (January 25, Tuesday)**

Three nights in Jaipur will allow time to enjoy this amazing city at a relaxed pace. You can opt out of any activities and simply relax in our regal hotel. Today takes us out of Jaipur (25 km) to Bagru, a town famous for its **wood block printing** on textiles. Afterward, return to the hotel for leisure time. In the evening, enjoy a sumptuous dinner of North Indian fare with Rajasthani dances. **Overnight at the Jai Mahal Palace (or similar), Jaipur. B/**

### **Day 16: Jaipur / Agra (January 26, Wednesday)**

In the morning drive to Agra (approx. 5 hrs), en-route visiting **Fatehpur Sikri**, an ancient city site built during the second half of the 16th century by the Emperor Akbar. Fatehpur Sikri (the City of Victory) was the capital of the Mughal Empire for some 10 years. The stunning complex of red sandstone monuments and temples (*right*) includes one of the largest mosques in India, the Jama Masjid. Later drive to Agra and check into the Grand Imperial Hotel (a Heritage hotel). **Overnight Grand Imperial Hotel (or similar), Agra. B/**

## *A Women's Tour*

A Tapestry of Textiles, and Premier Cultural and Religious Sites of North India



## KarmaQuest Ecotourism and Adventure Travel



### **Day 17: Agra / Delhi (January 27, Thursday)**

**Early morning visit to Taj Mahal**, when the light is at its best. Built by Shah Jahan, this stunning monument is a symbol of his eternal love for his wife, Mumtaz. Afterward, proceed for a visit to the historic **Agra Fort**, show-casing India's skills in sand-stone carving. Today is India's **Republic Day** (celebrating independence from British rule, in 1947). Sites will be open and the air will no doubt be festive! In the afternoon, drive to Delhi (4 hrs), and check in to your hotel for a short rest before a sumptuous **Farewell Dinner. O/N at the Taj Palace Hotel (or similar), Delhi. B/D**

*The Taj Mahal is widely considered the finest example of Mughal architecture anywhere, combining elements of Persian and Indian styles. It was listed as a UNESCO World Heritage Site in 1983 when it was described as a "universally admired masterpiece of the world's heritage."*

### **Day 18: Delhi departure (January 28, Friday)**

Check out from the hotel and proceed for a sightseeing tour of Old and New Delhi visiting the **Red Fort, Mahatma Gandhi Memorial, India Gate** and the towering Qutab Mindar. Later in the afternoon or evening transfer to international airport to board the flight for your onward journey. (Note: those wishing late check-out from the hotel may request it, for an extra charge). **B/**

### **(End of Services)**

### **Social Service Projects & Donations**

There are many service projects (NGO) are in North India (including those mentioned and visited in the itinerary). Your tour organizers will select one to be the beneficiary of a group donation, be it monetary and/or a donation of needed materials, equipment, etc.

Individual donations to social service projects are entirely up to you. We strongly encourage travelers to channel their generosity through an established and reputable organization, rather than give to beggars on the street (Note: some travelers have their own etiquette, e.g., donating to religious mendicants, handicapped persons. Please be aware that sometimes such beggars are frauds).

### **Rooming Arrangements/Group Size**

Trip participants will share a room with other participants on a rotation basis, and will have the opportunity to rotate into a single room time to time. There are no single supplements. The minimum group size will be 7 and the maximum group size will be 11 (including Christina Wilson) plus the Trip Leader, Wendy Lama.



## **KarmaQuest Ecotourism and Adventure Travel**

### **Trip Cost**

**US \$7,905 per person for a 7-8 member group**

**US \$7,490 per person for a 9-11 member group**

### **Tour Cost Includes**

- 16 nights' accommodation on twin sharing bed + breakfast basis as per the itinerary, with rotating 1-2 single(s) (depending upon the odd/even number of trip members)
- All transport services using air-conditioned vehicle
- Meeting and assistance for all international and domestic flight arrivals and departures with English speaking national representative.
- Service of local English speaking guide for sightseeing tours as per the itinerary
- Monument entrance fees applicable as per the itinerary
- Accompaniment by KarmaQuest Director Wendy Lama
- Elephant ride at Amber fort Jaipur
- Private boat ride on Lake Pichola in Udaipur
- Welcome Dinner (Mumbai) and Farewell Dinner (Delhi)
- Rajasthani dinner and cultural show in Jaipur
- Textile experts / guides for textile site visits.
- Tips for hotel staff, drivers, local guides

### **Tour Cost does not Include:**

- Domestic airfare within the itinerary: estimated at \$625 (please see below)
- International airfare from US to Mumbai, from Delhi to US
- Meals not included in itinerary (generally, lunch & dinner)
- Drinks at Group Dinners
- Early check-in and late check-out where flights require such
- Expenses of personal nature including drinks, phone calls, laundry, excess baggage, etc.
- Spa treatment (optional)
- Lunch at Devi Garh (optional)
- Transfer to and from Devi Garh for spa treatment in Udaipur
- Transportation for independent exploration during free time
- Visa fees
- Trip cancellation insurance (optional)
- Medical and emergency evacuation travel insurance (mandatory)
- Camera /video fees at monuments
- Social Service Donations (individual and group)

### **Bookings and Deposits**

To confirm your participation on this trip, please send a payment of \$1,850 per person as a non-refundable deposit to Terra Nova Travel, LLC along with your completed **Booking and Deposit Form**, a copy of your passport picture page, **Release of Liability** and a signed **Cancellations and Refunds** form.

Since space is limited, **please send your deposit and completed forms** to Terra Nova Travel, LLC **as soon as possible and no later than December 1, 2009** to reserve your place.

### *A Women's Tour*

A Tapestry of Textiles, and Premier Cultural and Religious Sites of North India



## **KarmaQuest Ecotourism and Adventure Travel**

**SEND TO: Terra Nova Travel, LLC, 2154 NW Aspen Ave, Portland OR 97210**

**Full payment will be due by June 1, 2010**

Upon receiving your deposit we will send you the following:

- A receipt for your deposit
- A Pre-Departure Information packet
- A Suggested Reading List for the country/region you will visit
- An Emergency Contact and Health Questionnaire to fill out and return
- In-Country Contact Information

### **Pre/Post Tour Extensions**

Pre- or post-trip extension packages will be offered to the following destinations:

Delhi, Varanasi/Bodhgaya, Dharamsala, and Goa

We would be happy to customize a trip extension to anywhere else in the region upon request.

### **Profiles of Key Trip Personnel**

#### **Christina Wilson, Trip Organizer**

Christina has been interested in traveling her entire life. In 1982 Christina took her first trip to Nepal and India. Since then, she has been going to every exotic place she can find in the world. Her goal is to visit all the interesting places including her own back yard during her lifetime.

Christina worked with Outward Bound for many years and it was there, putting women's trips together, that she found her passion. Outward Bound taught her that it was the journey, not the destination that was important. Also, the importance of giving back to the community that she visits. The trips she puts together always include a service project or a contribution to local organizations.

Christina has led many trips all over the world. Her trips are usually small so that the group travels intimately and easily. For the last twenty years she has led many groups to interesting places, Peru, Bolivia, Ecuador, Asia, Tibet, Italy, England, Bhutan, Thailand, Myanmar, Micronesia, Bali, Indonesia, just to name a few. Her most recent trip operated by KarmaQuest was with a small group of women who toured SE Asia in February 2009. Christina is a National Tropical Botanical Gardens member and currently on the Board of Trustees. She led her third trip for NTBG in November 2008 to Madagascar and South Africa and has recently returned from the NTBG-sponsored Amazon cruise led by NTBG Fellow and former head of Kew Gardens, Sir Ghilliean Prance.

#### **Wendy Brewer Lama, Tour Operator and On-the-Trip Manager KarmaQuest Ecotourism and Adventure Travel**

### *A Women's Tour*

**A Tapestry of Textiles, and Premier Cultural and Religious Sites of North India**





## **KarmaQuest Ecotourism and Adventure Travel**

KarmaQuest Ecotourism and Adventure Travel founders Wendy and Karma Lama have been organizing special interest, educational, adventure, eco-, and cultural trips to Asia for more than 20 years.

KarmaQuest's unique and award winning trips draw upon the expertise and relationships Wendy Lama has nurtured as an Ecotourism Specialist, working in mountain regions of Asia since the mid-1980s. Wendy works as an environmental consultant for a number of international organizations, advising government agencies, NGOs, tour operators, and mountain communities in the policies and practicalities of ecotourism and bioconservation.

While living in Nepal from 1984 to 1999, Wendy worked throughout Nepal, Tibet, Sikkim and Bhutan to develop the awareness and local skills to manage the negative impacts of tourism and to promote improved local livelihoods and conservation of natural and cultural resources through community-based ecotourism. She worked with the World Wild Fund for Nature (WWF) in Sichuan, China to develop an ecotourism management plan in support of panda conservation in Wanglang Nature Reserve. She helped develop a tourism master plan for Central Tibet for the United Nations Development Program (UNDP), and trained Tibetans in participatory ecotourism planning. In Kyrgyzstan, Wendy assisted women's groups and tour operators in the beginning stages of a successful Community-Based Tourism (CBT) initiative that is now a standard for Central Asia and beyond. For the past five years, she advised the UNESCO Cultural and Ecotourism in Mountain Regions of Central and South Asia program in Iran, Pakistan, Nepal, Bhutan, India, Tajikistan, Kyrgyzstan and Kazakhstan. Now she has introduced ecotourism to farmers, fisher-people, wineries, nurseries, and Main Street entrepreneurs in Half Moon Bay.

Karma Lama grew up in Sikkim, India where his family still resides. He lived in Nepal for much of his adult life where he became an accomplished mountaineer and a successful businessman, organizing treks, expeditions, scientific research and educational programs for American and European companies and universities in the Himalaya since the early 1980s. Karma's family hosts KarmaQuest guests to Sikkim, adding another layer of insight and enjoyment to the trips.

KarmaQuest organizes and operates ecotourism and adventure travel for individual and group travelers as well as organizations and universities. This is the 8th trip it has designed and operated in collaboration with Christina Wilson and Terra Nova Travel, LLC. It also operates the Stanford University Graduate Business School's Service Learning trips to India and China, accredited university programs for University of Puget Sound, Principia University, Virginia Tech, and in association the National Tropical Botanical Gardens, The Snow Leopard Conservancy and The Mountain Institute. KarmaQuest Ecotourism and Adventure Travel ([www.karmaquests.com](http://www.karmaquests.com)) is based in Half Moon Bay, California.

### **Nancy Pole-Wilhite, Travel Resource Person, Terra Nova Travel, LLC**

Nancy has worked as a travel consultant since 1978 specializing in exotic destinations. Since 1999 she has been an independent agent/trip designer operating her own company, Terra Nova Travel, LLC. Her keen interest in adventure travel and endangered cultures lead to her connection with Christina Wilson. For the last ten years she and Christina have collaborated on such trips as Baja kayaking, a trek to Machu Picchu, and NTBG Friends' trips to Bhutan in 2002, Thailand/ Myanmar in 2004, Madagascar/South Africa in November 2008, and an Amazon River cruise in June 2009.

### *A Women's Tour*

### **A Tapestry of Textiles, and Premier Cultural and Religious Sites of North India**



## **KarmaQuest Ecotourism and Adventure Travel**

In October 2008, Nancy visited Iguassu Falls and Buenos Aires, aptly named Paris of South America, to research a visual arts tour for a Portland art gallery. Her expertise also extends to Nepal, Tibet, Bhutan SE Asia, China as well as Africa, Chile, Argentina, Brazil, Peru and Ecuador.

Nancy has a BA from the University of California at Berkeley in English Literature and French. Her passion for Renaissance literature and art extends into the music world. For the past twenty years she has been a member of the liturgical choir, Cantores in Ecclesia

[www.cantoresinecclesia.org](http://www.cantoresinecclesia.org). Cantores is devoted to the performance of polyphonic music from the Renaissance as well as Gregorian Chant. Nancy also currently serves on the Board of the women's *a capella* group, In Mulieribus ([www.inmulieribus.org](http://www.inmulieribus.org)). She enjoys cooking French and ethnic foods, as well as gardening.

Nancy will serve as your travel resource person in the USA. She will be available to answer your travel questions regarding the "nuts and bolts" of this trip. Please visit her website at [www.terranovatour.com](http://www.terranovatour.com).

## **Contact Information**

**Please contact Christina Wilson with general questions about the trip.**

Tel: (503) 297-3234

[bumpus@pacifier.com](mailto:bumpus@pacifier.com)

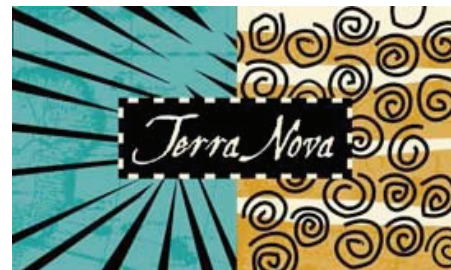
**Please contact Nancy Pole-Wilhite to book the trip, and for questions and assistance in pre-trip tour logistics, including flight bookings, the day to day itinerary, extensions, and other general travel questions**

Nancy Pole-Wilhite, Terra Nova Travel, LLC.

2154 NW Aspen Ave., Portland OR 97210

Telephone: (800)267-8002 or (503)296-7913 / Fax: (503)292-4314

Email: [nancy@terranovatour.com](mailto:nancy@terranovatour.com) [www.terranovatour.com](http://www.terranovatour.com)



**KarmaQuest Ecotourism and Adventure Travel**

***A Women's Tour***

**A Tapestry of Textiles, and Premier Cultural and Religious Sites of North India – January 11 to 28, 2011**

**BOOKING and DEPOSIT FORM**

**IMPORTANT:** This form must be completed, signed, and returned along with your non-refundable deposit payment of \$1,850 and a copy of your passport picture page to confirm your booking. Please get your booking and deposit in early to secure your space, as space on the trip is limited.

**Please print clearly your name as it appears on your passport:**

**Name:** \_\_\_\_\_

**Nationality and Passport Number:**  
\_\_\_\_\_

**Passport Place and Date of Issuance** \_\_\_\_\_

**Passport Date of Expiry** \_\_\_\_\_

**Birth Date** \_\_\_\_\_

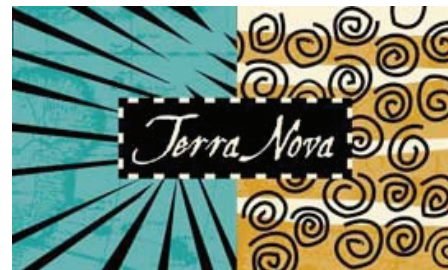
**Age** \_\_\_\_\_ **Sex** \_\_\_\_\_ **Height** \_\_\_\_\_ **Weight** \_\_\_\_\_

**Mailing address:**  
\_\_\_\_\_  
\_\_\_\_\_

**Work phone** \_\_\_\_\_ **Home phone** \_\_\_\_\_

**Email:** \_\_\_\_\_ **Cell phone** \_\_\_\_\_

**Frequent Flyer Account;**  
**Airline** \_\_\_\_\_ **Frequent Flyer Number** \_\_\_\_\_



**KarmaQuest Ecotourism and Adventure Travel**

Originating City \_\_\_\_\_ Seating preference \_\_\_\_\_

In Case of Emergency, Please Contact: \_\_\_\_\_

Phone: \_\_\_\_\_ Email: \_\_\_\_\_

**I have read, understand and accept the Karma Quest /Terra Nova Travel, LLC Cancellation & Refund Policy and Release of Liability.**

Signature \_\_\_\_\_ Date \_\_\_\_\_

\*\*\*\*\*

**TRIP DEPOSIT**

**(non-refundable)**

**Enclosed is my payment of \$1850.00 per person.**

**Total number of persons on this booking: \_\_\_\_\_**

**Total Amount of Deposit Enclosed      \$ \_\_\_\_\_**

*Checks should be made payable to Terra Nova Travel, LLC.*

.....  
**Please return *BOOKING & DEPOSIT FORM* to:**

**Nancy Pole-Wilhite  
Terra Nova Travel, LLC  
2154 NW Aspen Ave  
Portland OR 97210**



**KarmaQuest Ecotourism and Adventure Travel**

## **Cancellations and Refunds**

Please read the following carefully. Please initial each page at the bottom, sign the last page, and return the entire document to Terra Nova Travel and KarmaQuest before you depart on the trip. We suggest that you keep a copy for yourself.

If it becomes necessary for you to cancel your trip, please notify us immediately by phone or email, followed up with a signed statement by fax or certified mail. Once a booking is made, any cancellation is subject to the following cancellation fees based upon the date of receipt of the written cancellation notice:

### **Cancellation Fee Schedule**

#### **Days prior to trip departure**

Any time after initial booking  
60 to 90 days prior to trip departure  
01 to 59 days prior to trip departure

#### **Cancellation fee**

No refund of non-refundable deposit  
65% of total land cost  
100% of total land cost

Once you have booked and been confirmed on a trip that requires a medical certificate signed by a doctor, normal cancellation penalties apply if your doctor does not sign the certificate.

**We highly recommend that you purchase trip cancellation insurance to protect your investment in the trip.**

### **Refunds**

#### **Terra Nova Travel and KarmaQuest -Cancelled Trips**

Terra Nova Travel and KarmaQuest reserve the right to cancel any trip prior to departure for any reason, including insufficient sign-ups. If Terra Nova Travel and KarmaQuest cancel a trip, you will receive a full refund of all land payments paid (including any non-refundable deposit) releasing Terra Nova Travel and KarmaQuest from any further liability.

#### **Trips Cancelled or Modified by *Forces Majeure***

If a trip must be cancelled or if Terra Nova Travel and KarmaQuest are forced to modify the trip prior to trip departure for reasons of *force majeure* (namely acts of God, war or threats of war, labor strikes, riots, civil strife, terrorist activity, health epidemic, or natural disaster such as tsunami, earthquake, flooding, or fire), Terra Nova Travel and KarmaQuest will refund the portion of the trip cost that is available as refund from in-country suppliers and will use its best efforts to recover and refund the balance as promptly as possible. Terra Nova Travel's and KarmaQuest's own non-refundable deposit would not be refunded.

### ***A Women's Tour***

**A Tapestry of Textiles, and Premier Cultural and Religious Sites of North India**

**Your initials \_\_\_\_\_ - -**



## KarmaQuest Ecotourism and Adventure Travel

If *force majeure* results in the cancellation or change in the trip following trip departure, no refund will be given on final payment or deposit. Travelers will be responsible for any additional costs of returning home or for travelling to another destination (including extra or rescheduled flights, cancellation or re-scheduling fees, hotels and meals, transportation, and incidental costs) that arise due to the change in scheduling/routing by the *force majeure* situation.

Terra Nova Travel and KarmaQuest are not responsible for expenses incurred by trip members in preparing for a trip cancelled for reasons of *force majeure*, or cancelled by Terra Nova Travel and KarmaQuest for any reason, including nonrefundable advance purchase air tickets, air ticket cancellation or change fees, visa fees, inoculations, equipment, etc., or for any additional arrangements trip member have embarked upon prior to the scheduled group trip departure date.

Terra Nova Travel and KarmaQuest are not liable for any claims of damage in respect to any cancellation on any account whatsoever.

## Changes to the Itinerary and Pricing

While we endeavor to make the itinerary as accurate as possible, it should be considered as an approximate schedule of activities rather than a rigid schedule of events. Trip itineraries are subject to revision due to weather, trail and road conditions, government restrictions, local conditions, and other reasons beyond our control. In addition, current reconnaissance of routes sometimes determines a better routing - we do our best to ascertain that the best route possible is taken into the area.

We will endeavor to provide the hotels as indicated in the Trip Itinerary but cannot guarantee this. If a named hotel is not available, a comparable one will be provided. We will do our best to secure the best available accommodations.

I understand and agree to the above Cancellations and Refunds policy and fees.

Name: \_\_\_\_\_

Signature & Date: \_\_\_\_\_

Trip Name & Dates: \_\_\_\_\_

## A Women's Tour

A Tapestry of Textiles, and Premier Cultural and Religious Sites of North India

Your initials \_\_\_\_\_ - -



## KarmaQuest Ecotourism and Adventure Travel

### RELEASE OF LIABILITY AND ASSUMPTION OF RISK

I understand that the tour to which I am a party demands that I be in good health and physical condition. I acknowledge the risk and hazards of travel in remote areas where injury, delay or unanticipated events may occur. I am aware that participating in the *A Women's Tour, A Tapestry of Textiles, and Premier Cultural and Religious Sites of North India (January 11 to 28, 2011)* under the arrangements of *Terra Nova Travel LLC, and KarmaQuest Ecotourism and Adventure Travel* (hereafter referred to as *KarmaQuest*) and its agents, employees, or associates, I may be subjecting myself to dangers and hazards which could result in illness, injury, or death. I recognize that such risks, dangers, and hazards may be present at any time during the trip. I also realize that medical services or facilities may not be readily available or accessible during some or all of the time in which I am participating in the tour.

In consideration, and as part payment for the right to participate in the trip/tour, and the associated activities, services, and food arranged for me by *Terra Nova Travel LLC, and KarmaQuest* and its agents, employees, affiliates or associates, I have and do hereby fully assume all risk of illness, injury, or death, and hereby release, hold harmless, and discharge *Terra Nova Travel LLC, and KarmaQuest* and its agents, employees, affiliates or associates from all actions, claims, demands, or lawsuits for any accident, injury, property damage or personal loss to me or to those traveling with me in connection with any accommodation, transportation or other travel service, resulting from, related to, or arising in any manner out of my participation in the tour, as well as from any act of terrorism, defect in vehicle, break down in equipment, strike, theft, delay or cancellation of or changes in itinerary or schedule.

**I agree** that I will not sue *Terra Nova Travel LLC, and KarmaQuest* and its agents, employees, affiliates or associates for damages incurred as a consequence of my participation in tour caused by the negligence or other acts of *Terra Nova Travel LLC, and KarmaQuest* and its agents, employees, affiliates or associates or any employee, agent or contractor thereof.

**I agree** that if I suffer injury or illness, *Terra Nova Travel LLC, or KarmaQuest* and its agents, employees, affiliates or associates can, at my cost, arrange medical treatment and emergency evacuation service, as *Terra Nova Travel LLC, and KarmaQuest* and its agents, employees, affiliates or associates deem necessary for my safety.

**I agree** that the foregoing obligation, release, and assumption of risk shall be binding upon me personally, as well as upon my heirs, executors, assigns, and administrators, and for all members of my family, including any minors accompanying me. I have carefully read this agreement and fully understand its contents, terms, and conditions. I am aware that this is a release of liability and contract between me and *Terra Nova Travel LLC, and KarmaQuest* and/or its affiliated organizations or representatives, and I sign it of my own free will

Dated: \_\_\_\_\_ Signature: \_\_\_\_\_

(Name in Block Letters) \_\_\_\_\_

Please sign and return this form to **Terra Nova Travel, LLC, 2154 NW Aspen Ave, Portland OR 97210.**

*A Women's Tour*  
A Tapestry of Textiles, and Premier Cultural and Religious Sites of North India